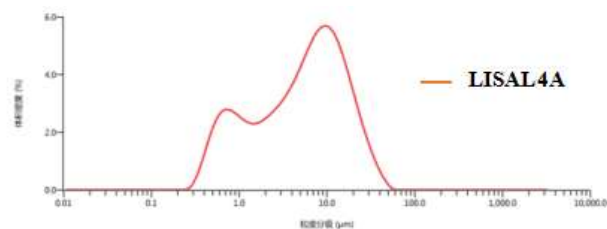
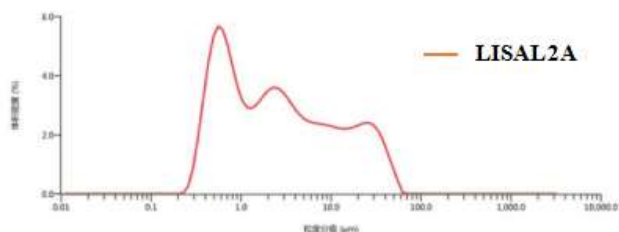


1 Physical/Chemical Properties

Items		LISAL™2A	LISAL™3A	LISAL™4A
Chemical Properties ^[1]		Typical Value	Typical Value	Typical Value
Al ₂ O ₃	[%]	89.51	89.51	89.51
Na ₂ O	[%]	0.008	0.008	0.008
CaO	[%]	0.03	0.03	0.03
SiO ₂	[%]	5.64	5.64	5.64
Fe ₂ O ₃	[%]	1.28	1.28	1.28
Physical Properties ^[2-3]		Typical Value	Typical Value	Typical Value
<45um	[%]	99.5	98.0	97.0
D50	[um]	2.3	3.8	5.2
D90	[um]	11.7	15.9	18.1



[1]: Thermal Science X-ray Fluorescence Analyzer and Thermo Fisher Scientific Atomic Absorption Spectrometer are used to measure the chemical composition.

[2]: The method of water-washing and screening the fines is used to measure the fraction of $\leq 45\mu\text{m}$.

[3]: Mastersizer 3000 Laser Particle Size Analyzer is used to measure the physical particle size distribution D50/D90.



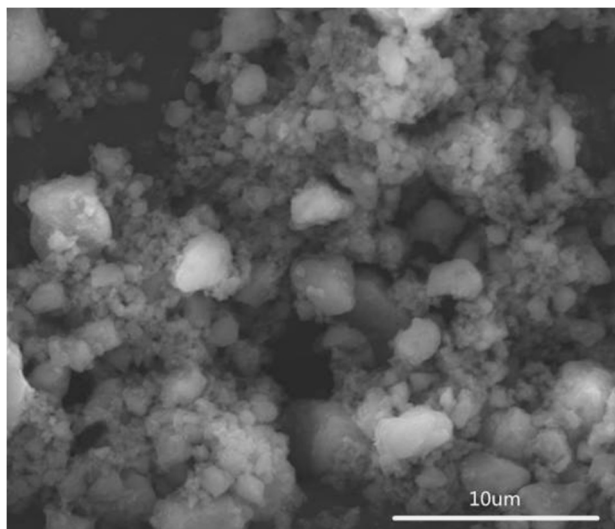
High Alumina Fines

产品说明书

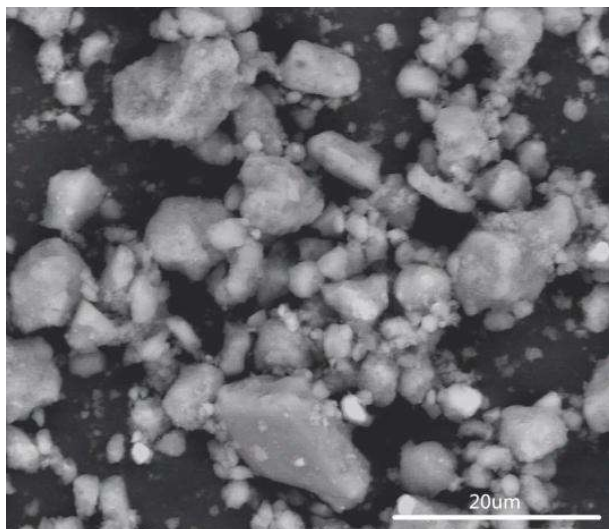
LISAL™

2

Products Microstructure



LISAL™ 2A



LISAL™ 4A

3

Certification



4

Shipping



5

Contacts for Sales, Technical Service

Zhejiang Zili Advanced Materials Co., Ltd
Add: 338th Baixie Rd, Baiguan Town, Shangyu City,
Zhejiang Province, 312300, China
Tel: +86-0575-82112629
Fax: +86-0575-82112629
Email: sales@zilialutech.com
Web: www.zilialutech.com

Zili USA LLC
Add: 100 Ali Street, Pittsburgh, PA, 15215, USA
Tel: +001-412-418-6676
Email: jsun@ziliref.com