

Dense Sintered Corundum LITAL™-DSC

Product Information

1 Description

Dense sintered corundum is the new product with high bulk density based on the ordinary sintered tabular alumina. Compared with tabular alumina, the bulk density of dense sintered corundum could reach above 3.65g/cm^3 , the apparent porosity is below 3.0%, and the water absorption is below 1%. dense sintered corundum has better properties of mechanical strength, erosion resistance and abrasive resistance.

The properties improve the performance of the refractory products and extend the working life.

2 Application

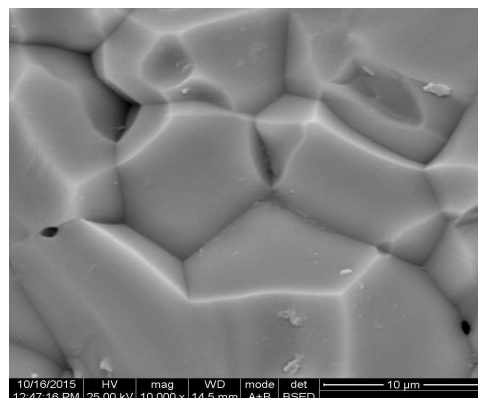
Widely used in the refractories of strict condition like sliding gate, purging plug brick, nozzle, and impact zone of steel ladle, refractories castables for BF trough and runners. The working life and safe modulus could be improved by using dense sintered corundum.



3 Product Picture



LITAL™-DSC



Microstructure of LITAL™-DSC

4 Packaging & Storage

Convenient packages of 25kg paper/plastic woven bag as well as 1mt bulk bag are available. Other customized packages are provided upon request.

For best product performance and longer shelf life, re-packing is not recommended.

Dense Sintered Corundum LITAL™-DSC

Product Information

5 Dense Sintered Corundum

Physical Properties	Typical Value	Max.	Min.
Bulk Density (g/cm ³)	3.70	-	3.65
Apparent Porosity (%)	2.0	3	
Water Absorption (%)	1.0	1.2	
Chemical Composition	Typical Value	Max.	Min.
Al ₂ O ₃ (%)	99.2	-	99.0
SiO ₂ (%)	0.05	0.1	-
Na ₂ O(%)	0.25	0.3	-
Fe ₂ O ₃ (%)	0.05	0.15	-

6 Particle size distribution(Customized sizes are available upon request)

Fraction	Min./Max.	Typical	Fraction	Min./Max.	Typical
6-3mm(3-6mesh)			0.2-0.6mm(28-48mesh)		
+6.3mm	0-2	1	+0.71mm	0-2	1
+5.0mm	15-45	25	+0.5mm	2-25	9
+4.0mm	30-60	45	+0.25mm	65-95	81
-2.0mm	0-3	1	-0.212mm	0-10	5
3-1mm(6-14mesh)			5-2mm(1/4in-8mesh)		
+3.36mm	0-2	0.5	+5.0mm	0-10	5
+2.0mm	30-60	50	+4.0mm	20-55	35
-1.0mm	0-10	1	-2.0mm	0-5	1
1-0mm(-14mesh)			0.3-0mm (-48 mesh)		
+1.4mm	≤2	0	+0.3mm	0-5	1
1.4-1.0mm	8-25	15	+0.25mm	0-10	4
1.0-0.5mm	20-40	35	+0.125mm	20-55	45
-0.106mm	5-25	18	-6.3mm	0-5	1
-100Mesh			-325Mesh		
+0.15mm	0-10	4	+0.063mm	0-2	1
-0.045mm	20-50	45	-0.045mm	90-100	95

The above mentioned data represent standards values obtained from our current production line. Guarantees with respect of these data are only valid if agreed upon in writing. We reserve the right to make alterations due to technical developments.

7

Certification



8

Shipping



9

Contacts for Sales, Technical Service

Zhejiang Zili Advanced Materials Co., Ltd
Add: 338th Baixie Rd, Baiguan Town, Shangyu City,
Zhejiang Province, 312300, China
Tel: +86-0575-82112629
Fax: +86-0575-82112629
Email: sales@zilialutech.com
Web: www.zilialutech.com

Zili USA LLC
Add: 100 Ali Street, Pittsburgh, PA, 15215, USA
Tel: +001-412-418-6676
Email: jsun@ziliref.com